



CHARLOTTE MECKLENBURG COC
GOVERNANCE REDESIGN KICK-OFF
MEETING

Natalie Matthews, MSW

Abt Associates Inc.

(natalie_matthews@abtassoc.com)

August 14th, 2019

Accessing Polls

- Go to www.menti.com and enter the code that you're provided (I'll type it on the screen for each poll)
- Results will appear to us all as they are received
- If you're joining us remotely, you can also provide comments and feedback by typing in to the questions or comments box on the screen

Poll: Go to www.menti.com
Code:

- What role/area of this work do you represent?
 1. Person with lived expertise (homeless or formerly homeless)
 2. Housing provider or developer
 3. Homeless service provider
 4. Mainstream service provider
 5. Funder
 6. Government official or agency
 7. Other

Federal Funding for Homelessness

- Initially homeless funding awarded to public and private entities through an application directly to HUD
- Then, in the 2000s NOFAs started to require a community process to determine projects that would be submitted in a combined application
- HEARTH Act (2009) formalized the Continuum of Care structure
- CoC Program interim rule (2012), codifies this and provides more detail on this work

What is a Continuum of Care (CoC)?

- The planning body in a community that addresses the needs of people experiencing or at risk of homelessness
- The CoC is made up of a broad group of relevant stakeholders including jurisdictions, providers, people with lived expertise, funders and businesses that are responsible for creating a response to homelessness in the community

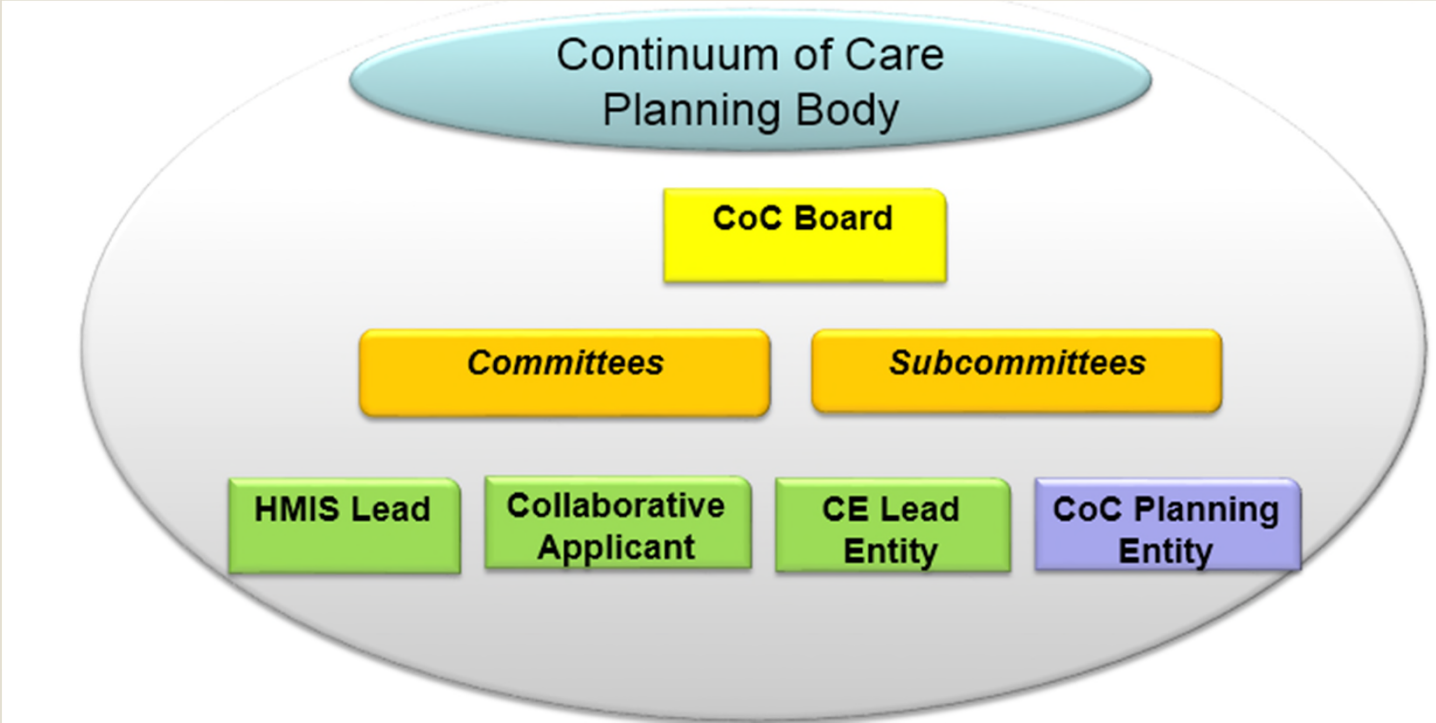
CoC Membership

- CoC membership should ensure:
 - Community wide commitment to ending and preventing homelessness
 - Representation of the relevant organizations within the entire CoC
- The CoC Board is selected to make decisions on behalf of the CoC membership

Major CoC Planning Body Duties

- Operate the Continuum of Care (including designing and implementing coordinated entry)
 - Monitor project and system performance
 - Designate an HMIS for the CoC (select software and HMIS Lead)
- Plan for the CoC's geographic area
 - Coordinate the CoC system of services and housing interventions
- Select and approve projects for the CoC Program funding application to HUD

CoC Model



CoC Governance

- The CoC Board is the CoC's designated *decision-making body*
- Must be established by the CoC to act on behalf of the CoC membership
- CoC Board selection process must be outlined in governance charter; HUD does not prescribe how this has to be done
- What the CoC means by “on its behalf” must be specified in the CoC governance charter

CoC Decision Making Approach

- The CoC membership and the CoC Board use a collaborative decision-making process because making homelessness rare, brief and one-time can't be done by one entity
- Need many partners and coordinated resources and solutions

CoC Requirements

1. At a minimum, hold semi annual meeting of the full CoC membership, with published agendas
2. Invite new members to the CoC at least annually
3. Appoint additional committees, as deemed necessary by CoC
4. Adopt and follow a written board selection process
5. Develop a governance charter

CoC Requirements (continued)

6. Establish performance targets, monitor performance, evaluate outcomes, and take action against poor performers
7. Evaluate ESG and CoC project outcomes and report to HUD
8. Establish and operate a centralized or coordinated assessment system
9. Establish written standards for providing assistance

Audience Question

What duties does the CoC board have?

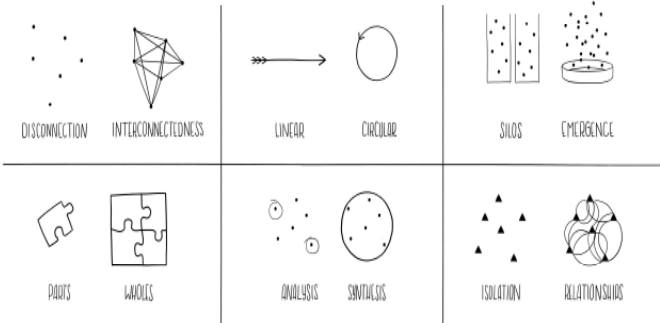
- A. Approval of the CoC application funding priorities and project ranking, as well as any other responsibilities delegated to the board in the CoC's governance charter
- B. Only those responsibilities delegated to the board by the CoC membership in the CoC's governance charter
- C. Ultimate responsibility of all CoC's responsibilities specified in the CoC Program interim rule

Current CoC Model in CharMeck

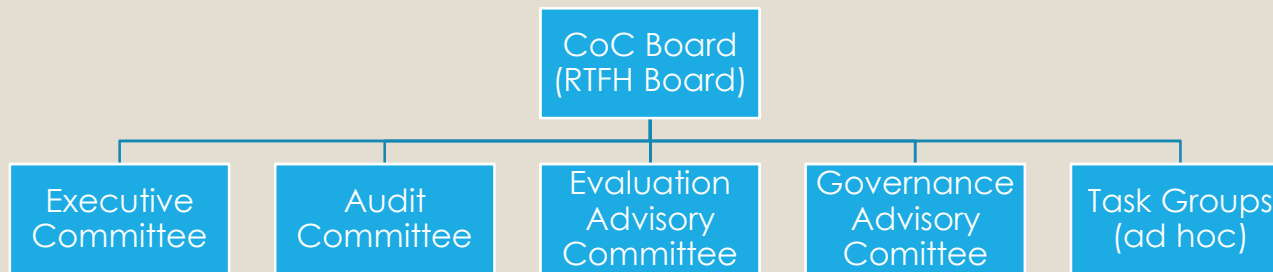
CoC Best Practices



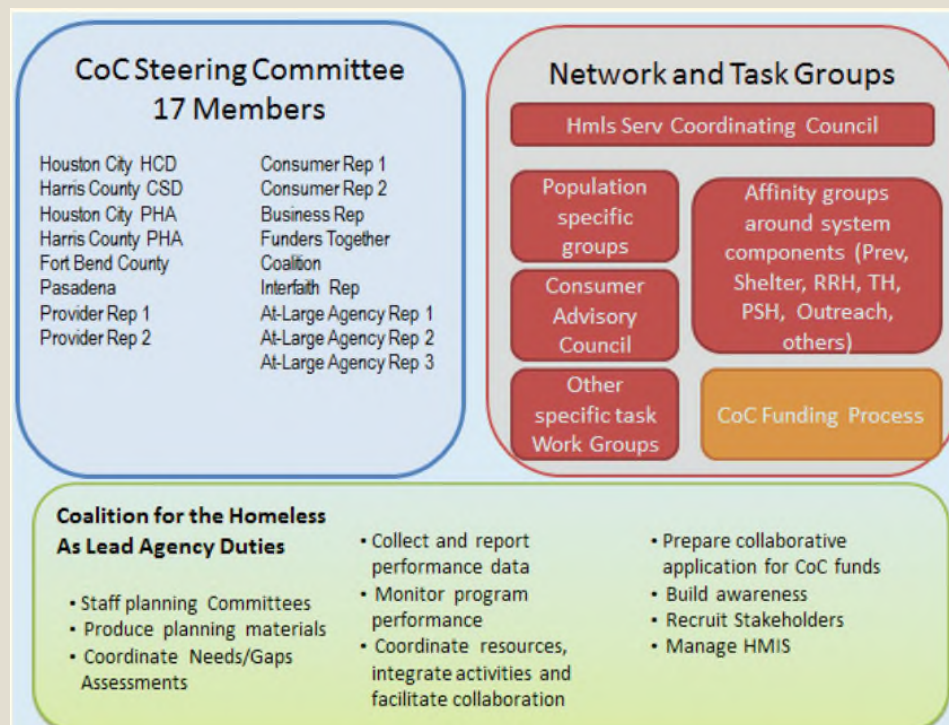
TOOLS OF A SYSTEM THINKER



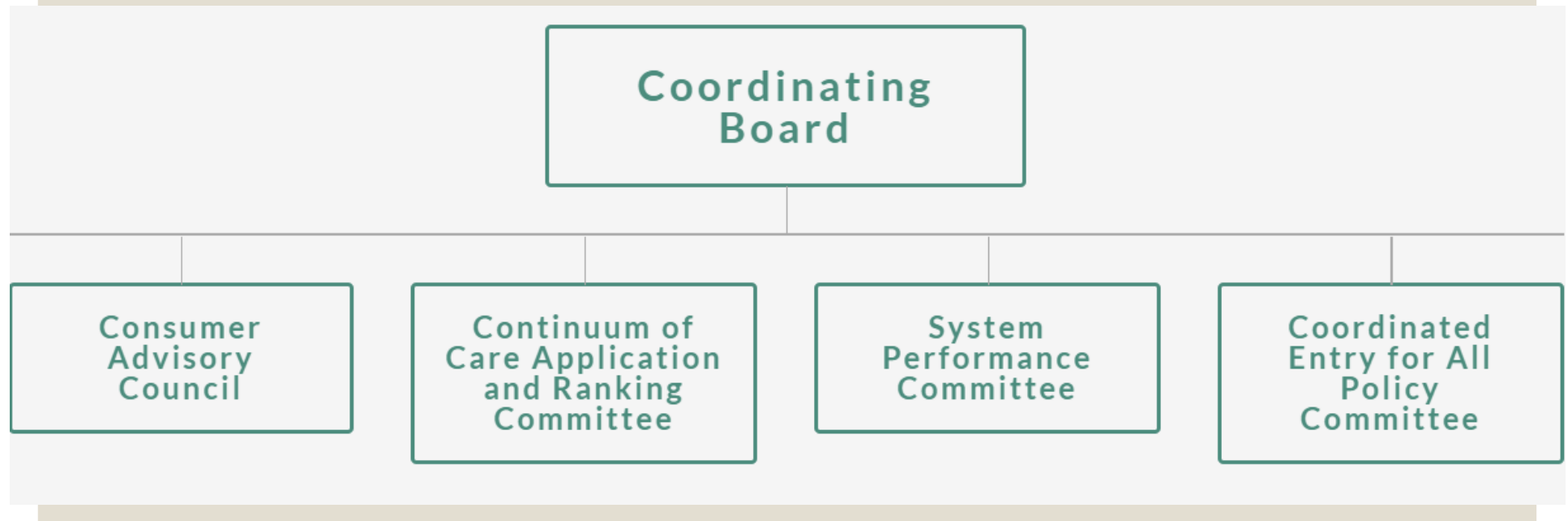
San Diego, CA



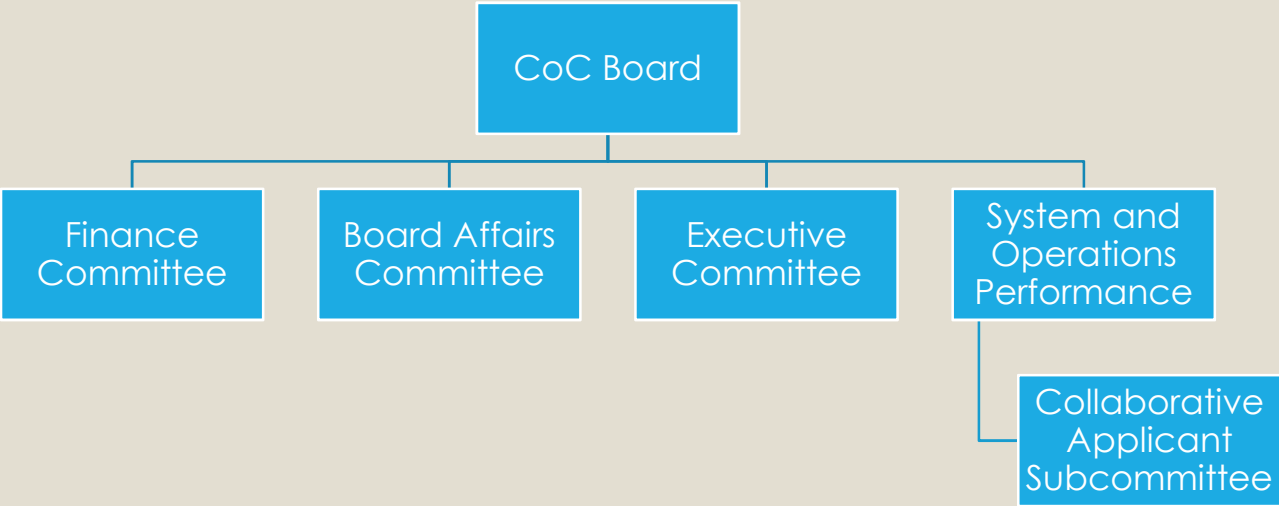
Houston/Harris County, TX CoC



Seattle/King County, WA



Chicago, IL



Poll: www.menti.com

- Which of the models seems most appealing to you?
 1. Strong Lead Agency less-defined Primary Decision-Making Group (current Charlotte model; San Diego)
 2. Strong Primary Decision-Making Group, Clearly Defined Lead Agency (Houston)
 3. Strong Board of Lead Agency Represents the Primary Decision-Making Group (Chicago, Seattle)
 4. Not sure; need more information/context
 5. Not sure; need more time to think about it
 6. None of them sound appealing to me

Discussion/Feedback

- What's appealing about any of the models shared?
- What seems like something to try and avoid?
- What type of discussions and additional information would you like to have about these models to learn more about them?

Proposed CoC Governance Timeline



- About CSS
- Homeless Services
 - > Homeless Services
 - > Programs
 - > Partnerships
 - > Coordinated Entry
 - > Housing Information
 - > Housing Stability Funding
 - > Charlotte/Mecklenburg

Charlotte-Mecklenburg Continuum of Care (CoC)

Print Share

COC CHANGE

In response to the continued community need for permanent, affordable housing, Mecklenburg County and the City of Charlotte are partnering to shift the management of the Continuum of Care (CoC) from the City to the County.

The work of the CoC is mandated by the U.S. Department of Housing and Urban Development (HUD) and is designed to promote communitywide commitment to the goal of ending and preventing homelessness as well